

BACKLIGHT BULB REPLACEMENT INSTRUCTIONS

P/N EA-15-BULB* OR EA15-BULB2**



WARNING: This procedure should only be performed by qualified personnel who are experienced in working with electronic equipment. Take the necessary steps to prevent damage from static electricity discharge. Disconnect input power to the touch panel before proceeding. Be careful not to pinch the ribbon cable between the housing and bezel when re-assembling the panel.

C-more Replacement Bulbs		
C-more Model	Bulb Model	C-more Serial Number
EA7-T15C	EA-15-BULB*	EA7-T15C+10Z22B120 and older
	EA-15-BULB2**	EA7-T15C+10Z22B121 thru EA7-T15C+14110B999
	Non-Replaceable LED	EA7-T15C+14111B001 and newer

Serial Number = [Part Number]+[YYMDDFNNN]

Date Code = **YYMF**

YY: Year (05–99 --- e.g. 05 = 2005)

M: Month (1–9, X, Y, Z --- e.g. X = Oct.)

DD: Day (1–31)

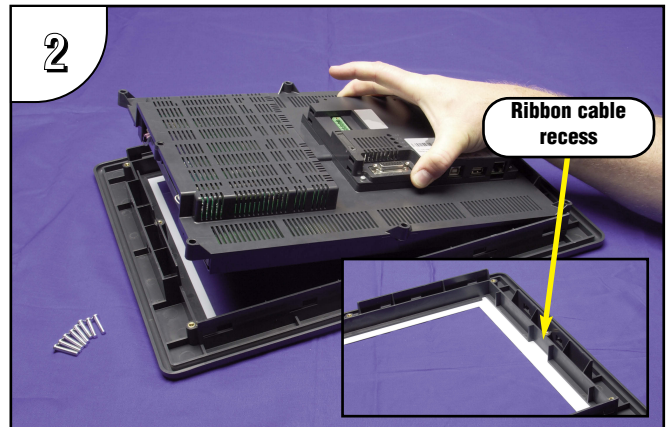
F: Manufacturing Site (0–9, A–Z)

NNN: Sequence number for the date listed (000–999)

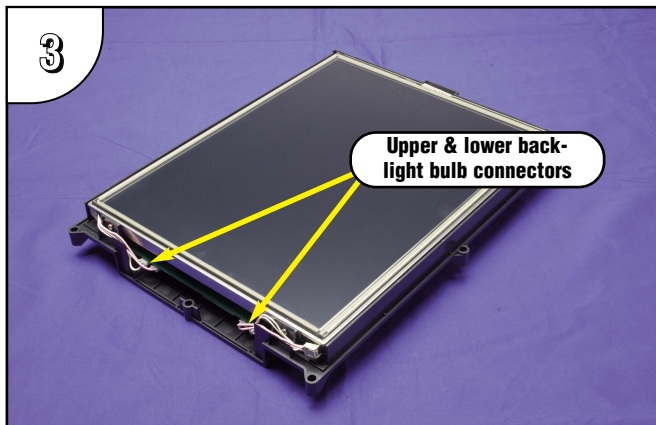
Preparation: Disconnect input power and all other connections, then remove the touch panel from the control cabinet. In a clean environment, place the panel face down on a lint-free soft surface to prevent scratching the front of the panel.



With power disconnected, use a #2 Phillips screwdriver to remove the eight outer screws holding the touch panel's main electronics housing to the front bezel.



Lift the touch panel's main electronics housing from the front bezel. Set the front bezel and eight screws to the side. Observe the ribbon cable recess on the front bezel (see detail) for use in re-assembling the panel.



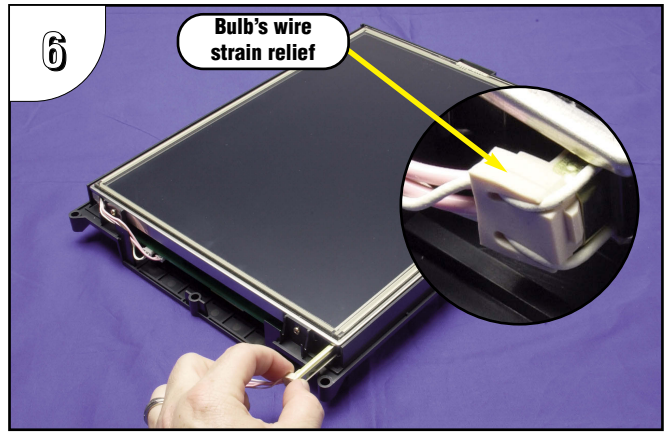
Place the touch panel's main electronics housing facing up on a lint-free soft surface. Position the housing so that the backlight bulb connectors are in plain view.



Carefully lift the bulb's wires out of the wire guides so they are free from obstructions. Do this for both the upper and lower backlight bulbs.



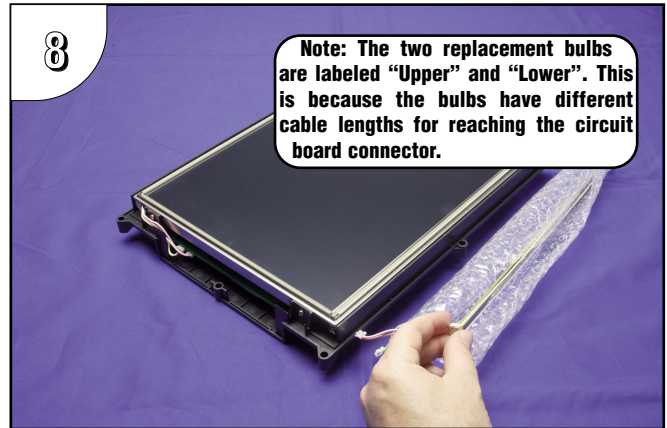
5
Unplug each backlight bulb's two power cable connectors from the circuit board connectors. Again, do this for both the upper and lower backlight bulbs.



6
Bulb's wire strain relief
Grasp the bulb's wire strain relief (see detail) and gently slide the bulb from its guide. Do this for both bulbs. The bulb is glass and fragile, so handle with care.



7
This photo shows the backlight bulb completely removed from its guide in the panel's main electronics housing. (Only one bulb shown.)



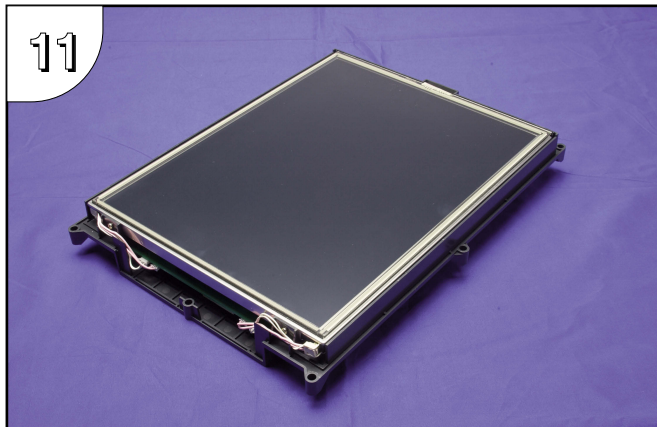
8
Note: The two replacement bulbs are labeled "Upper" and "Lower". This is because the bulbs have different cable lengths for reaching the circuit board connector.
Remove the replacement bulb from its shipping tube and the protective bubble wrap. Note: The replacement bulbs come in pairs and should be replaced in pairs for longevity and maintenance convenience.



9
Position the replacement bulb so that the opening in its three-sided gold colored reflector faces toward the LCD touch screen. Using gentle pressure, slide the bulb into the guide until it is flush with end of guide.



10
Plug each backlight bulb's two power cable connectors back into their respective circuit board connectors. Each bulb's two connectors are keyed to prevent mismatching.



11
Gently position each backlight bulb's wires back into the wire guides. Position any excess wire length in between the printed circuit board and the LCD to prevent it from becoming pinched between the housing and bezel.



12
Position the touch panel's main electronics housing into the front bezel so that the flat ribbon cable on the housing aligns with the recess in the front bezel. Insert the eight screws and tighten to a maximum of 70 oz-in [0.5 Nm].